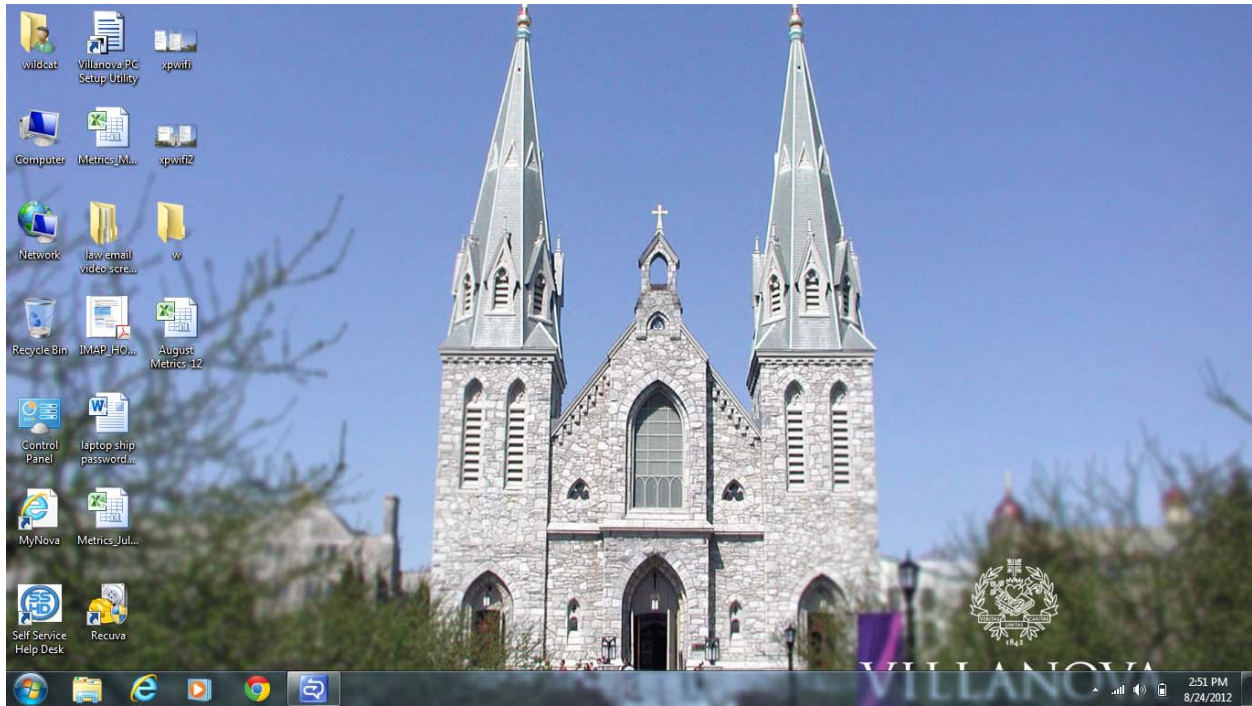
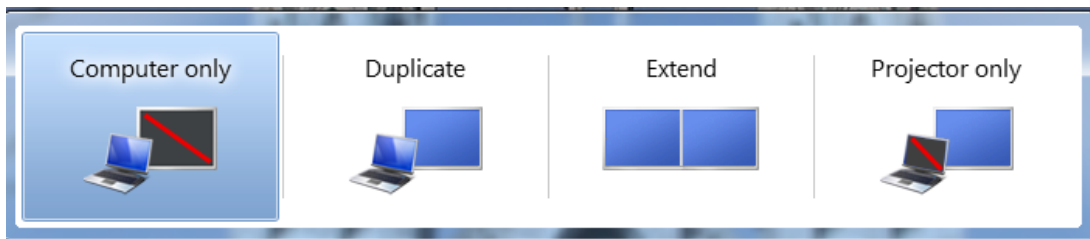


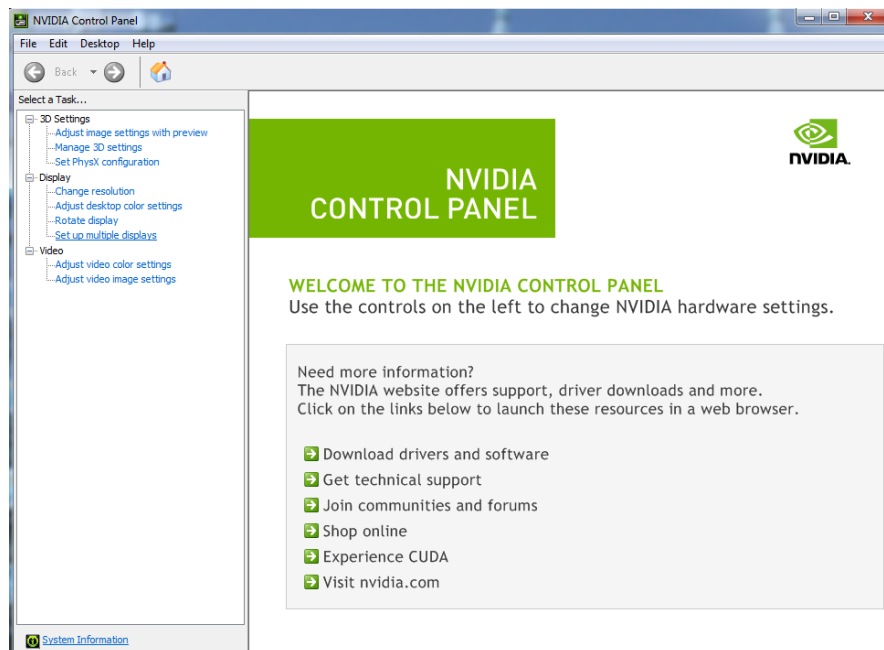
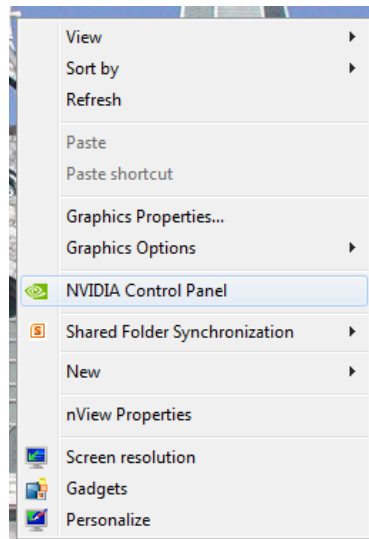
If you can not duplicate your display to a projector, follow the steps below:



Press Window Key + P → Choose “Computer Only”.



Right click anywhere on the desktop and choose “NVIDIA Control Panel”.



On the left hand side, select “Set up multiple displays” under the “Display” section.

NVIDIA Control Panel

File Edit Desktop Display Help

Back

Select a Task...

- 3D Settings
  - Adjust image settings with preview
  - Manage 3D settings
  - Set PhysX configuration
- Display
  - Change resolution
  - Adjust desktop color settings
  - Rotate display
  - Set up multiple displays
- Video
  - Adjust video color settings
  - Adjust video image settings

System Information

## Set Up Multiple Displays

NVIDIA nView technology allows you to specify how you would like to use multiple displays.

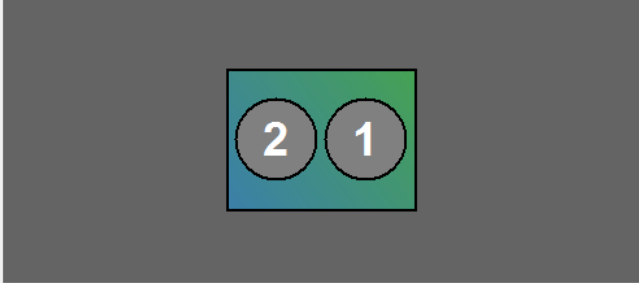
**1. Select the displays you want to use.**

Intel(R) HD Graphics Family

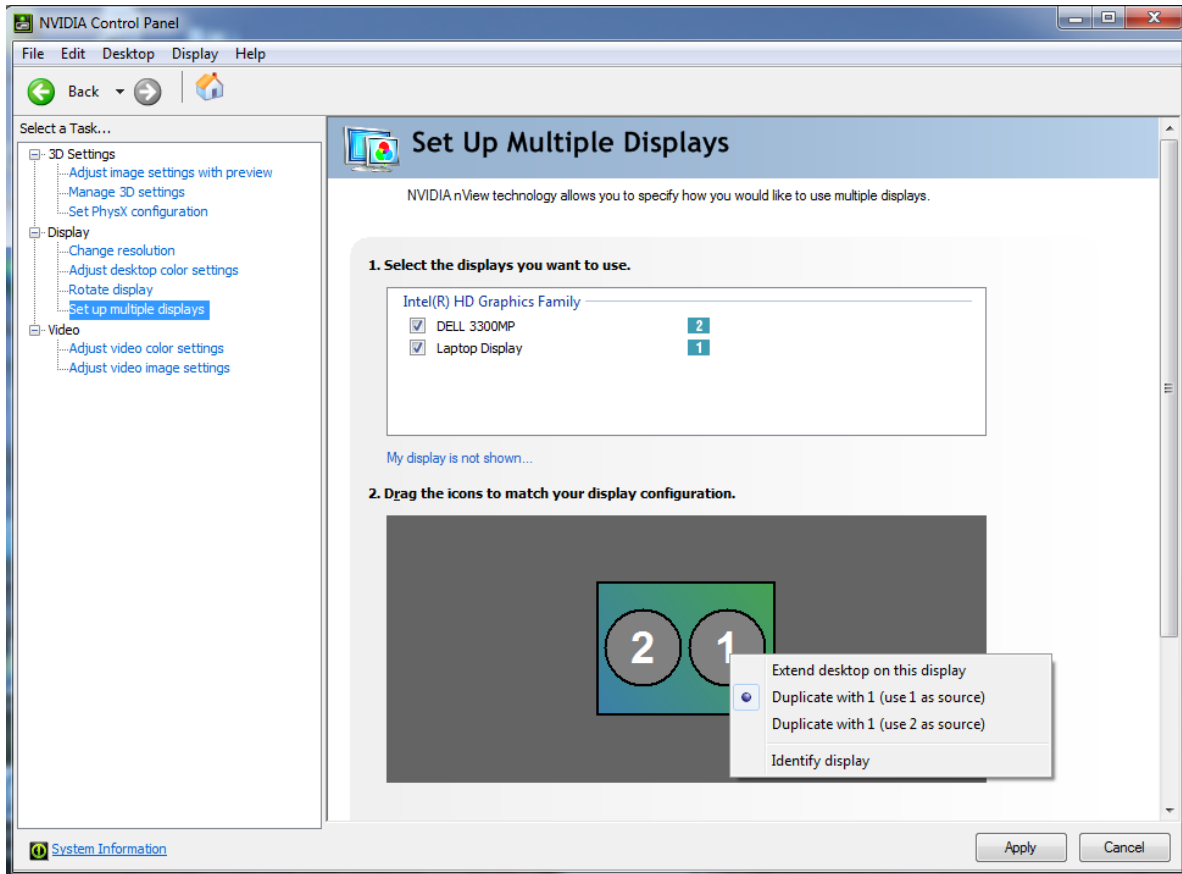
- DELL 3300MP 2
- Laptop Display 1

[My display is not shown...](#)

**2. Drag the icons to match your display configuration.**



Ensure both displays (Laptop Display and Projector Name) are selected. Right click on Display 1 and choose the “Duplicate using 1 as source” option.



Click “Apply” to complete the process to Mirror displays.